

香港消防處

Hong Kong Fire Services Department



消防及救護學院

Fire and Ambulance Services Academy



救災扶危 為民解困

SERVING WITH COURAGE, PASSION AND COMMITMENT

MISSION STATEMENT

OUR VISION

To serve Hong Kong by making it a safe place to live and work.

MISSION

- To protect life and property from fire or other calamity.
- To give advice on fire protection measures and fire hazards.
- To educate the community and to promote the public awareness on fire safety.
- To render ambulance aid to the sick and the injured and convey them to hospital.

VALUES

- Upholding high standards of integrity.
- Striving for professionalism and continuous improvement.
- Dedication and commitment to providing quality service.
- Readiness in meeting challenge and accepting accountability.
- Maintaining high spirit and esprit de corps among staff members.

OUR CORE FUNCTIONS

Fire Suppression

Respond rapidly to fire calls and carry out effectively both land-based and marine firefighting operation.

Rescue Services

Provide effective and efficient rescue services on land and at sea.

Fire Protection

Advise the public on fire protection measures; promote public awareness of fire safety; enforce fire services legislation and handle licensing and certification issues.

Emergency Ambulance Services

Respond expeditiously to ambulance calls and provide effective, efficient and advanced emergency ambulance services.

使命宣言

理想

為香港市民服務，務使香港成為安居樂業的地方。

使命

- 保障生命財產免受火災或其他災難侵害。
- 提供有關防火措施及火警危險的意見。
- 教育市民，並提高公眾的消防安全意識。
- 為傷病者提供急救護理及運送往醫院的服務。

信念

- 保持高度廉潔正直。
- 發揮專業精神、精益求精。
- 致力提供優質服務。
- 時刻準備面對挑戰、勇於承擔責任。
- 維持良好士氣和團隊精神。

主要職責

滅火

迅速處理火警召喚，並有效地執行陸上及海上的滅火工作。

救援服務

提供快捷有效的海陸救援服務。

防火

向市民提供有關防火措施的意見、提高市民的消防安全意識、執行消防法例，並處理牌照審批事宜。

緊急救護服務

迅速處理救護召喚，並提供快捷、有效和先進的緊急救護服務。





WELCOME TO THE FIRE AND AMBULANCE SERVICES ACADEMY

The mission of the Hong Kong Fire Services Department (FSD) is to protect life and property from fire and other calamities. To better fulfill its mission to save those in distress and protect the community, the Department strives for continuous advancement in its services in the areas of firefighting, rescue, emergency ambulance, mobilising & communications and fire protection.

The Fire and Ambulance Services Academy (FASA), situated at No. 11 Pak Shing Kok Road, Tseung Kwan O, Hong Kong, was commissioned in January 2016. Constructed at a cost of HK\$3.5 billion, FASA well-equipped with state of art training facilities to offer a wide range of training from foundation fire and ambulance training to advanced techniques in dealing with disasters. It also serves as a breeding ground for firefighters, ambulance staff, mobilising & communications and workshop personnel who will be better trained to serve the community.

歡迎到消防及救護學院

香港消防處的使命是致力保障本港市民的生命及財產，守護他們免受火警及其他災難傷害。為履行「救災扶危，為民解困」的使命，消防處不斷在滅火、救援、救護、調派及通訊，以及防火等服務範疇力求進步。

消防及救護學院(學院)座落於香港將軍澳百勝角路11號，已在2016年1月投入服務。學院耗資港幣35億元興建，設備完善，提供廣泛及多元化的訓練，從消防及救護人員的基礎訓練，以至處理重大災難所需的先進技術。學院亦擔當消防、救護、調派及通訊，以及工程職系屬員的訓練搖籃，讓他們得到更完善訓練，以服務社會。

TRAINING AT THE ACADEMY 消防及救護學院訓練

With an area of about 158,000 square metres, FASA provides over 500 residential training places. It mainly provides foundation training for new fire and ambulance recruits and in-service training courses for various grades of serving members. FASA will also provide training courses relating to fire and ambulance services for other government departments, private sectors, and its local and overseas counterparts.

Teaching facilities in FASA include a Fire and Ambulance Services Education Centre cum Museum, lecture rooms, an auditorium, a multi-purpose hall, computer rooms, a resource centre, a mock court, a press interview room, a press conference room, law enforcement interview rooms, simulated dangerous goods stores, ambulance practical training rooms, a simulated accident and emergency room of hospital and a disinfection room. The new campus also provides physical training facilities which include a physical training complex with gymnasium, an aquatic rescue pool, an outdoor physical training ground, an adventure challenge course and a jogging track.

學院佔地約**158,000**平方米，提供逾**500**個訓練宿位，主要為新入職的消防和救護學員提供基礎訓練，並為各級現職屬員提供在職訓練。學院亦為其他政府部門、私營機構、本地和海外同業提供與消防及救護服務相關的訓練課程。

學院的教學設施包括消防及救護教育中心暨博物館、講習室、演講廳、多用途禮堂、電腦室、資源中心、模擬法庭、模擬記者採訪室、模擬記者招待會場、模擬執法會面室、模擬危險品倉庫、救護實習訓練室、模擬急診室及消毒室。新校園亦提供多項體能訓練設施，包括附設體能訓練設施的體育館、水上救援游泳池、戶外體能訓練場、歷奇挑戰場和戶外跑道。



SPECIALISED TRAINING FACILITIES

The specialised training facilities mainly cover emergency scenarios which are relatively complex and large-scale, including incidents related to buildings, transportation, marine and water, gas plant, aircraft, hazardous materials and structural collapse. All these incidents could possibly be encountered by firemen and ambulancemen, and their impact could be relatively serious and widespread. The simulators enable fire and ambulance personnel to receive realistic training in a safe simulated setting, so that they can be better equipped with firefighting and rescue techniques to enhance operational efficiency.

Burn House

The diversity of building materials used, the complexity of building layouts as well as the variety of materials used in furniture and stored in premises in various types of buildings make it more challenging for firefighters to carry out their firefighting and rescue duties. In view of this, advanced indoor live fire training facilities are provided in FASA to enhance their firefighting capability in handling various types of fire incidents. With reference to previous fire incidents, the Burn House simulates a number of indoor fire scenarios, including sub-divided units in old buildings, hotels, industrial buildings and karaokes. Vivid live fire, high temperature, audio effect and smoke are simulated to help trainees acquire better firefighting and rescue techniques in a safe and controlled environment.



專業培訓設施

專業訓練設施主要涵蓋可能發生而情況較複雜的大型緊急事故，包括各類樓宇事故、交通運輸事故、海上事故、燃氣設施事故、飛機事故、危害物質事故及坍塌事故。這些事故是香港消防和救護人員可能會遇到的，而且影響較嚴重和廣泛。因此，模擬訓練設施能讓消防及救護人員在安全的環境下得到模擬實境訓練，藉以提高他們的滅火和救援技術，令行動更有效率。

滅火訓練樓

各類建築物的建築物料、間隔及單位內的家具用料及貯存物不盡相同，增加了消防人員救火救人的難度。有鑑於此，學院提供了先進的室內實火訓練設施，以提高消防人員處理各類火警的滅火技能。參考過往火警的情況，滅火訓練樓模擬多個室內火災場景，包括唐樓分間單位、酒店、工業樓宇及卡拉OK等。場景內能營造逼真的實火、高溫、聲效及煙霧，使學員能在安全及受控制的模擬實火環境下提升滅火和救援技能。



Rescue Training Tower

In view of the proliferation of high-rise buildings in Hong Kong, the Department always prepares for incidents that might occur in all kinds of buildings. The Rescue Training Tower is a ten-storey building in which an array of settings, including shopping centre, old residential building, public housing estate, factory and commercial building with curtain wall, are simulated on different floors and at the building façade. Scenarios of persons being locked in a lift are also simulated. Trainees can practise strategies and techniques of firefighting, rescue and causality handling in various kinds of buildings. The Rescue Training Tower can also facilitate the specialised training of the High Angle Rescue Team.

救援訓練樓

香港高樓林立，消防處需時刻準備就緒，以應付各類樓宇可能發生的事故。救援訓練樓樓高十層，不同樓層及外牆模擬不同的場景，包括商場、舊式住宅、公共屋邨、工廠及設有玻璃幕牆的商業樓宇，另設置升降機有人被困的模擬場景，讓學員能演練各類樓宇的滅火、救援及傷者處理策略和技巧。救援訓練樓的設施亦有助加強高空拯救專隊的專業訓練。



Ambulance Services Training

One of the advantages of pooling the Ambulance Services Training facilities in this area is that trainees can go through a simulated process that starts from responding to an ambulance call, carrying out patient assessment, administering medical treatment, handing over a patient to hospital staff and conducting disinfection in one go. During the comprehensive training, the trainees would first receive a call on board the Simulated Ambulance Compartment. After unloading the equipment, the trainees will bring along the equipment to the simulated scene in the Syndicate Room, where they would perform patient treatment as per Patient Assessment Model. The patient will then be transported to the “Simulated Ambulance Compartment” on a stretcher, and further treatment, stabilisation, intervention and examination will be carried out on board the compartment. Lastly, the patient will be conveyed to the A&E Department Simulation Room for handover procedures. Disinfection procedures will also be practised in the Disinfection Simulation Room.

In addition, the simulated Accident and Emergency Room can simulate the environment of a hospital, thereby to provide ambulance personnel with effective training on handing over patients to medical staff of hospital. Handling patients with infectious disease poses major risks to ambulance personnel while carrying out their operational duties. Meanwhile, the Disinfection Room provides a realistic training site for ambulance personnel to practise disinfection procedures.

救護訓練

救護訓練區將各類救護訓練設施集合於一處，優點之一是學員可一次過進行整個模擬出勤過程，即由收到救護召喚開始，繼而替病人進行評估、施行治理程序，以至最後移交病人及進行消毒程序。綜合訓練期間，學員會先在「模擬救護車廂」內接到召喚。學員從車上卸下裝備後，便會帶同裝備前往「小組研討室」內的模擬場景，並按「病人評估模式」為病人進行治理。學員跟着會使用抬床將病人送往「模擬救護車廂」，並在車廂內施行進一步治理、穩定情況、進行介入程序及檢查，最後將病人送往「模擬急症室」，以進行移交程序。學員亦會在「模擬消毒室」練習消毒程序。

此外，「模擬急症室」可模擬醫院的環境，並就救護人員將病人移交院方醫務人員的過程，提供有效訓練。在執行行動職務時，救護人員如須處理患有傳染病的病人，將面對重大風險。「模擬消毒室」提供模擬實境的訓練場地，供救護人員練習消毒程序。



Compartment Fire Behaviour Training (CFBT)

Firefighters have to deal with various types of building fires and unavoidably face the extreme threats of “flashovers” and “backdraughts” during indoor firefighting. The multi-storey Compartment Fire Behaviour Training facility can simulate “ventilation”, “flashover” and “backdraught” effects. It will help enhance the response capability and readiness of firefighters who work under extreme heat and smoke-filled conditions.

CFBT Simulator

The CFBT simulator is a 3-storey structure constructed from 19 numbers of 40-foot freight containers. A total of 4 fire zones are designed on G/F of the compartment and carbonaceous fuel (chipboards) will be burnt in those fire zones. Thermocouples are installed in designated monitoring points to measure and record the temperature during training. Hot smoke generated from fire zones can be diverted to 1/F and 2/F by hatches to simulate different kinds of fire scenarios for the trainees to practise different search & rescue and ventilation strategies. The training will help enhancing the safety and efficiency of fire personnel under extreme circumstances.

The Backdraught Demonstration Unit

It is a 6m-long structure with fire protection lining and a temperature monitoring system. It is used to demonstrate fire progression and extreme fire behaviour. Trainees are able to witness the various stages of fire development as well as signs and symptoms of extreme fire behaviours such as flashovers and backdraughts at a safe distance.



室內煙火特性訓練

消防人員經常要面對樓宇火警，亦要面對室內火警中極為危險的「閃燃」與「回燃」現象。煙火特性訓練設施樓高數層，可分別示範「通風」、「閃燃」及「回燃」現象，這有助加強消防人員在極高溫和煙霧瀰漫情況下的應變能力及心理準備。

室內煙火特性訓練室

多層式室內煙火特性訓練室是由十九個四十尺長貨櫃組成的三層式結構。在訓練室底層共有四個用作燃點木板的點火區。同時在訓練室的不同位置亦裝有溫度計，用作監察和記錄操練時的溫度。從點火區產生的熱煙可經管道引導至訓練室的一樓和二樓，模擬不同類型的火災場景，為消防員提供不同的搜救和通風策略訓練。這些訓練將有助於提高消防人員在極端情況下工作的安全和效率。

回燃示範室

回燃示範室是一個六米長的結構，裝有防火隔層和溫度監測系統，用以示範火警進程和極端煙火特性。學員能在安全距離下觀察火警發展的不同階段和極端煙火特性，如「閃燃」和「回燃」現象的徵兆。



Traffic Incident Training

Simulations of Railway Station and Train Tunnel

The entire railway network in Hong Kong is woven by numerous railway lines with underground stations and tunnels. Given the multitude of daily railway commuters in Hong Kong, any incident occurred at an underground railway station or tunnel may pose potential risks of causing significant loss of lives and properties. The simulated railway station and rail tunnel can provide a more realistic simulation of large-scale railway incidents and train fire. With this facility, firefighters and ambulance personnel can practise the operational procedures, evacuation strategies, firefighting techniques and mass casualty handling.



Simulations of Road Tunnel and Highways

Hong Kong's roads are among the most heavily used in the world. The roads in Hong Kong are interwoven into an extensive network of road tunnels and highways. Given the heavy traffic, any road traffic incident inside a road tunnel or a highway may result in significant loss of lives. The simulated road tunnel and highways can provide a more realistic simulation of large-scale road traffic accidents involving heavy vehicle, bus, private car or oil tanker. With this facility, firefighters and ambulance personnel can practise rescue techniques on extrication, vehicle stabilisation and mass casualty handling.



交通事故訓練

模擬鐵路站和列車隧道

香港鐵路網絡龐大，多條鐵路線縱橫交錯，並建有多個地下車站和隧道。鑑於香港每天都有大量鐵路乘客，如地下車站或隧道發生事故，都可能會對生命和財產造成嚴重損失。模擬鐵路站和列車隧道可提供更逼真的大型鐵路事故及列車火警模擬訓練。消防及救護人員亦可藉着這套設施熟習行動程序、疏散策略、滅火技術及處理大量傷者的方法。



模擬行車隧道及高速公路

香港的道路使用率位居世界前列。龐大的公路網絡以多條行車隧道及高速公路連接起來。由於香港路面交通十分繁忙，行車隧道或高速公路一旦發生交通事故，都可能會對生命和財產造成嚴重損失。模擬行車隧道及高速公路可提供更逼真的嚴重交通事故模擬訓練(包括重型車輛、巴士、私家車或油缸車)。消防及救護人員亦可藉着這套設施熟習解救傷者的救援技巧、車輛穩定方法及處理大量傷者的方法。



Fuel Tank and Petrol Filling Station Incident Training

Incidents at oil depots may involve fire and oil spillage. If handled improperly, it may lead to serious disasters. Oil tank simulator can allow trainees to experience the circumstances they may face in an oil tank fire, thereby strengthening the training of firefighters in this respect. Besides, there are a lot of large-scale LPG tanks in Hong Kong. In the event of fire, the cylinder pressure will rapidly increase, which may lead to cylinder rupture, gas leakage or explosion accident. The LPG tank simulator can provide valuable opportunities for trainees on the proper handling of fire involving an LPG tank.



燃料庫及加油站事故訓練

貯油庫可能發生的事故包括火警及漏油。如處理不當，可能會釀成嚴重災害。模擬油庫事故訓練設施可讓學員了解油庫發生火警時可能出現的情況，藉以加強消防人員在這方面的訓練。香港設有不少大型石油氣缸。一旦發生火警，石油氣缸內的壓力會迅速增加，可能引致貯存缸破裂、氣體洩漏及爆炸事故。模擬石油氣缸訓練設施為學員提供寶貴機會，學習如何正確處理涉及石油氣缸的火警事故。



There are innumerable fuel and LPG filling stations throughout the territory, with many of them being located in densely populated areas. Any incident involving a filling station may cause serious damage to properties and loss of lives. The Fuel and LPG filling station simulators can strengthen training on firefighting and rescue operations involving multiple casualties.

香港有不少加油站及加氣站，當中不少設於人煙稠密的地區，一旦發生事故，可能會對生命及財產造成嚴重損失。模擬加油及加氣站訓練設施有助加強涉及大量傷者的滅火及救援行動訓練。



Aquatic Incident Training

Simulation of Vessel Fire

As the interior environment and structure of a ship are different from those of a building, firefighters face far greater challenges when performing firefighting and rescue duties on board a vessel. The ship fire simulator simulates the environment of a four-deck ship, in which the lowest deck is modeled on a cargo ship while the other three decks a cruise liner. There are a number of live fire training compartments in the mock-up ship for simulation of scenarios in passenger compartment, engine room, heated oil piping, etc.



水上事故訓練

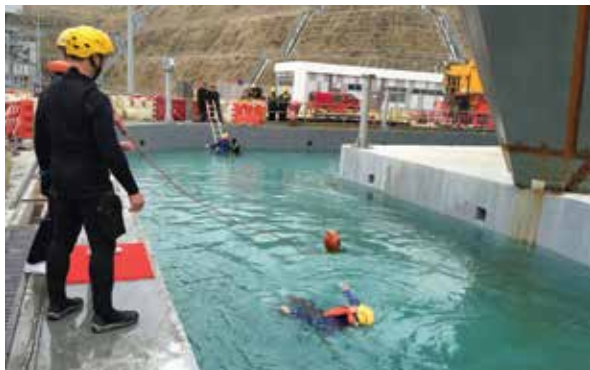
模擬船隻火警

由於船隻的內部環境和結構與樓宇截然不同，消防人員於船上執行滅火及救援任務時面對的挑戰大大增高。這套模擬船隻事故訓練設施模擬一艘四層甲板高的船隻，最低層甲板模擬貨船，另外三層甲板則模擬郵輪。模擬船內設有多個實火訓練場，模擬乘客艙、機房、熱油管道等場景。



Simulation of Swift Water Rescue

In the past, there were a number of serious flooding incidents in Hong Kong. Swift water sporadically brought about by heavy rain may lead to loss of lives. The swift water rescue simulator, which simulates an outdoor river channel encircling the ship fire simulator, will create artificial swift water effects so as to enhance trainees' techniques and response capability in swift water.



模擬急流拯救

香港過往曾發生多宗嚴重水浸事故，而豪雨造成突如其來的急流，可能會導致人命損失。這套訓練設施有一條模擬露天河道，環繞模擬船隻事故訓練設施，可製造人造急流效果，藉以提升學員在急流拯救方面的技能和應變能力。



Aircraft Incident Training

An aircraft incident may result in a large number of casualties and occur not only at the airport but at other locations in Hong Kong. As the firefighting and rescue techniques for aircraft incidents are quite different from those employed in other major incidents, the aircraft fire simulator featuring various types of aircrafts including Airbus A380 and Boeing B767 can provide a more realistic training venue for firefighters and ambulance staff as well as the Mobilization and Communications Group to practise the operational procedures, evacuation strategies and firefighting techniques, and their response capability in handling mass casualty incidents will also be enhanced.



飛機事故訓練

飛機事故往往涉及大量傷者，而且不限於機場內發生，香港其他地點亦可能會發生飛機事故。鑑於處理飛機事故的滅火及救援方法有別於其他大型事故，因此，模擬飛機事故訓練設施特設不同類型的模擬飛機，包括空中巴士A380及波音B767，提供更逼真的訓練場地，讓消防、救護與調派及通訊職系人員熟習有關的行動程序、疏散策略及滅火技術，並提升他們處理涉及大量傷者事故的應變能力。



HazMat Training

While Hong Kong has relevant legislation in place to regulate the manufacture, conveyance and storage of hazardous materials such as chemicals and radioactive materials, the Department will stay alert to HazMat incidents as such incidents may put the lives and properties of the community at risk. Professional knowledge, techniques, tools and training are instrumental in dealing with such incidents. Over recent years, the Department has been striving to enhance its capability in handling HazMat incidents, and the HazMat Team has been set up in this regard. The simulated HazMat training area provides a simulated gas leakage chamber, a HazMat laboratory, a dangerous goods store, a chlorine store, etc. Trainees can acquaint themselves with operational strategies, skills of using various detectors and protective equipment, and the sealing and decontamination techniques during HazMat incidents.

危害物質事故訓練

香港雖訂有相關法例規管化學和放射性物品等危害物質的製造、運送及貯存，但一旦發生危害物質事故，便可能會對市民的生命和財產構成嚴重危害，因此，消防處須時刻保持警覺，防範這類事故發生。要應付此等事故，專業知識、技術、工具和訓練不可或缺。消防處近年積極提升處理危害物質事故的能力，並為此成立危害物質專隊。危害物質事故訓練區提供了模擬氣體洩漏室、危害物質實驗室、危險品倉庫和氯氣貯存倉等設施。學員可熟習行動策略，掌握各種探測器和防護裝備的使用技巧，以及學習如何在事故中進行密封和洗消程序。



Urban Search and Rescue (USAR) Training

The main duty of USAR Team is to carry out search and rescue of victims trapped or buried underneath the rubble after structural collapse, landslides or other major incidents occurred locally or overseas. The Urban Search and Rescue Training Ground, which simulates building collapse scenarios, provides training on search and rescue operations under adverse circumstances such as landslides and building collapse incidents. An underground concrete conduit is also provided to enable trainees to conduct rescue and casualty handling training in a realistic but safe environment.

坍塌事故搜救訓練

坍塌搜救專隊的主要職責，是在本港或外地發生構造物坍塌、山泥傾瀉或其他重大事故時，搜救被困或埋在瓦礫下的人。坍塌搜救訓練場模擬樓宇倒塌場景，提供各種惡劣環境下(如山泥傾瀉和樓宇倒塌事故)的搜救行動訓練。場內亦設有一條地下混凝土管道，供學員在安全的模擬實境下進行救援及傷者處理訓練。



High Angle Rescue (HAR) Training

The main duty of the High Angle Rescue Team (HART) is to carry out rescue operations at high angle locations with special features such as cable cars, tower cranes, bridge towers, scaffoldings at construction sites and suspended working platforms of high-rise buildings. Various high angle training facilities are provided in the Technical Rescue Training Area, which include a high angle rescue tower, a simulated tower crane and a simulated cable car system for the training of high angle rescue techniques to be employed by rescuers in various scenarios.

高空拯救訓練

高空拯救專隊的主要職務是在某類高空環境執行救援行動，例如纜車、塔式起重機、橋塔、建築地盤棚架及高樓大廈的吊船。特種救援訓練場提供多元化的高空拯救訓練設施，包括高空拯救訓練塔、模擬塔式起重機及模擬懸吊纜車系統，訓練學員掌握拯救人員在不同環境下所採用的高空拯救技術。



Driving Training

The pledged response times of the Department for calls to fires in buildings are 6 minutes for the built-up areas and 9 to 23 minutes for areas of dispersed risks and isolated developments. For emergency ambulance service, the target response time is 12 minutes. In order to meet the Department's pledge for the densely populated environment in Hong Kong, it is crucial that the emergency driving training focus on the safe control of fire appliance and ambulance. The Driving Training Centre in FASA provides an advanced driving training simulator and a designated training ground for emergency driving training. Besides, the road network inside FASA is also designed to simulate the real driving environment in Hong Kong for driving training purpose.

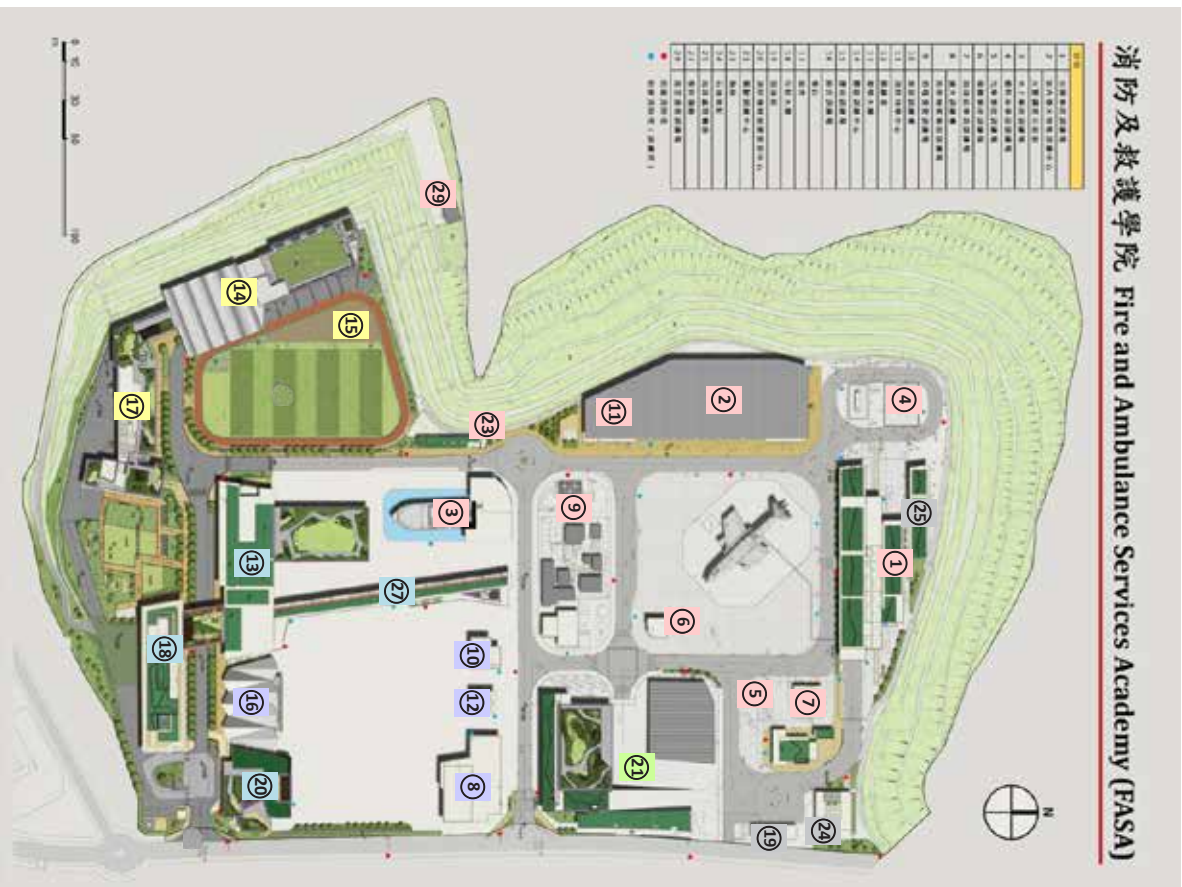


駕駛訓練

消防處承諾在6分鐘內抵達樓宇密集地區處理樓宇火警召喚，並在9至23分鐘內抵達樓宇分散及偏遠地區處理同類召喚。至於緊急救護服務，目標召達時間為12分鐘。香港人煙稠密，為履行上述服務承諾，消防處須以安全操控消防車輛和救護車作為緊急駕駛訓練的重點。學院的駕駛訓練中心設有先進的駕駛訓練模擬設施和指定訓練場地，用作進行緊急駕駛訓練。此外，學院內的道路網絡設計亦模擬香港的真實環境，以供駕駛訓練用途。



消防及救護學院 Fire and Ambulance Services Academy (FASA)



編號	設施名稱
1	行政大樓
2	交通意外調查示範室
3	水上事故訓練場
4	燃料庫事故訓練場
5	汽車事故訓練場
6	飛機事故訓練場
7	加油站事故訓練場
8	滅火訓練樓
9	坍塌搜救訓練場
10	救護訓練樓
11	消防科學中心
12	操練塔
13	高空拯救訓練場
14	體能訓練中心
15	應急訓練場
16	看台
17	宿舍
18	行政大樓
19	消防及救護教育中心暨博物館
20	消防及救護教育中心暨博物館
21	室內煙火特性訓練中心
22	火警調查示範室
23	消防科學中心
24	石油氣缸
25	應急訓練場
26	應急訓練場
27	救護訓練樓
28	救護訓練樓
29	高空拯救訓練場
30	救護訓練樓
31	救護訓練樓
32	救護訓練樓
33	救護訓練樓
34	救護訓練樓
35	救護訓練樓
36	救護訓練樓
37	救護訓練樓
38	救護訓練樓
39	救護訓練樓
40	救護訓練樓
41	救護訓練樓
42	救護訓練樓
43	救護訓練樓
44	救護訓練樓
45	救護訓練樓
46	救護訓練樓
47	救護訓練樓
48	救護訓練樓
49	救護訓練樓
50	救護訓練樓

Zone	Ref.	Proposed Name	建議名稱
Administration, Teaching & Public Education Zone 行政、教學及公眾教育區	18	Administration Block	行政大樓
	13	Teaching Block	教學大樓
	27	Education Skywalk	教育走廊
Physical Training & Living Zone 體能訓練及生活區	20	Fire and Ambulance Services Education Centre cum Museum	消防及救護教育中心暨博物館
	14	Physical Training Centre	體能訓練中心
Driving Training Zone 駕駛訓練區	15	Adventure Training Area	應急訓練場
	17	Dormitory	宿舍
Specialised Training Zone 專項訓練區	21	Driving Training Centre	駕駛訓練中心
	4	Fuel Tanks Incident Training Area	燃料庫事故訓練場
	1	Traffic Incident Training Area	交通事故訓練場
	2	Fire Investigation Demonstration Unit	火警調查示範室
	2	Compartment Fire Behaviour Training Centre	室內煙火特性訓練中心
	11	Fire Science Centre	消防科學中心
	6	Aircraft Incident Training Area	飛機事故訓練場
	7	Petrol Filling Station Incident Training Area	加油站事故訓練場
	5	Vehicle Incident Training Area	汽車事故訓練場
	9	Urban Search and Rescue Training Area	坍塌搜救訓練場
	23	Kennel	狗房
Integrated Training Ground 綜合訓練場	3	Aquatic Incident Training Area	水上事故訓練場
	29	High Angle Rescue Training Area	高空拯救訓練場
	10	Rescue Training Tower	救護訓練樓
	12	Drill Tower	操練塔
	8	Burn House	滅火訓練樓
	16	Grandstand	看台
	25	Foam Treatment Plant Room	泡沫處理機房
Ancillary Facilities 輔助設施	24	LPG Tank	石油氣缸
	19	Petrol Filling Station	加油站

